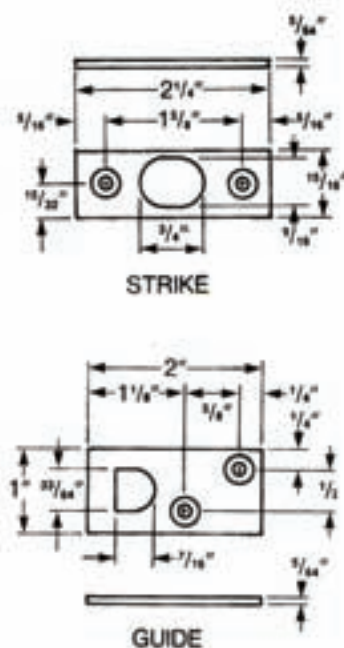
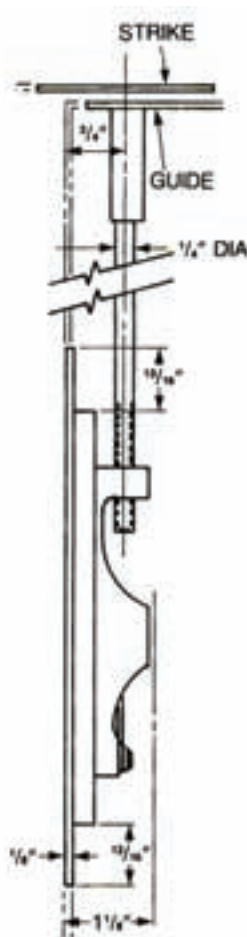
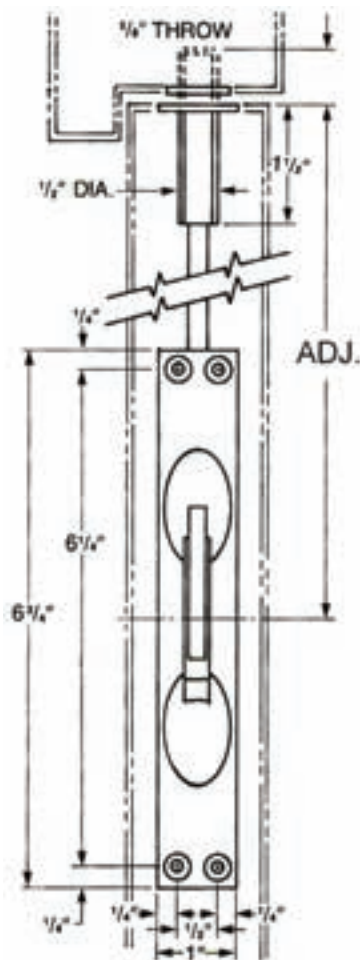


FB**GENERAL HARDWARE****MANUAL FLUSHBOLTS****FEATURES**

- **FB197** - Forged Brass.
- **FB197AL** - Extruded Aluminum.
- Non-Handed.
- 5/8" Throw with 7/8" Vertical Adjustment.
- 12" Rod to Fit Standard ANSI Preparation.
- Spring Loaded Lever to Project or Retract Bolt.
- Forged Brass Construction.
- Bolt Housing Screws #8 x 32 x 1/2" MS
#8 x 1" SM
- Strike Screws #8 x 32 x 1/2" MS
#8 x 1" SM
- Bolt Guide Screws #8 x 32 x 1/2" MS
#8 x 1" SM
- Listed up to 3 hours on Hollow Metal and Steel-Covered Composite Doors up to 8 feet.

SPECIFICATIONS

Manual Flushbolt - Manual Flushbolts shall be by **TA** model number **FB197SB** series made from forged brass or **FB197AL** series made from extruded aluminum. Flush bolts shall be provided with 1/2" diameter brass bolts and project 5/8" from the top or bottom edge of door with 7/8" vertical adjustment. Flush bolts shall have spring loaded lever to project or retract the bolts.

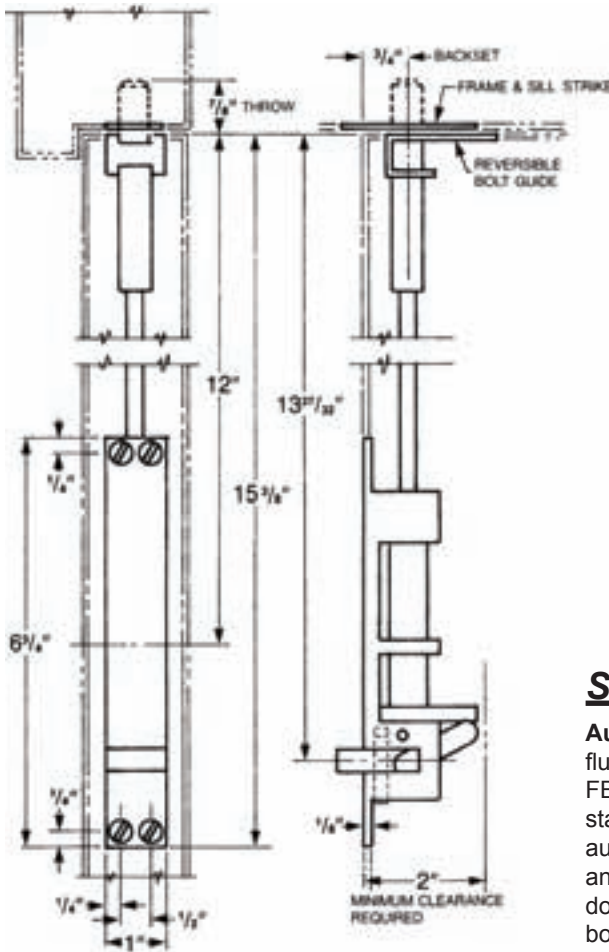
CODE COMPLIANCE

- FED. SPEC. - 1049
- ANSI - A156.16.
- BHMA - L14081
- NFPA 80 -National Fire Protection Association

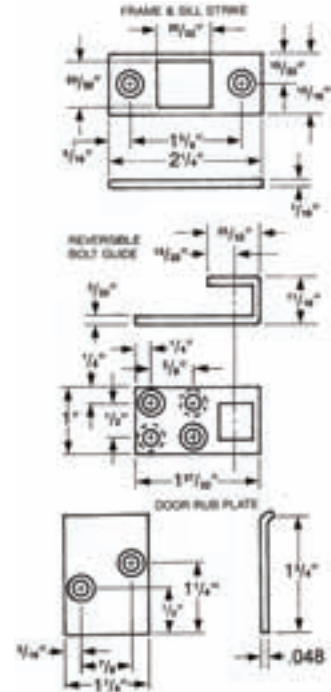
1 YEAR WARRANTY

DOOR HARDWARE
www.tahardware.com

AUTOMATIC FLUSHBOLTS FOR METAL DOORS



FBA292



SPECIFICATIONS

Automatic Flushbolt for Metal Door - Automatic flushbolts for metal doors shall be by **TA** model number FBA292 series, and body shall be made of steel and stainless steel components. Flushbolts shall be automatically retracting when active door is opened and project into the frame header or floor when the door is closed. Bolts shall project 3/4" from the top or bottom edge of door with 1" adjustment.

FEATURES

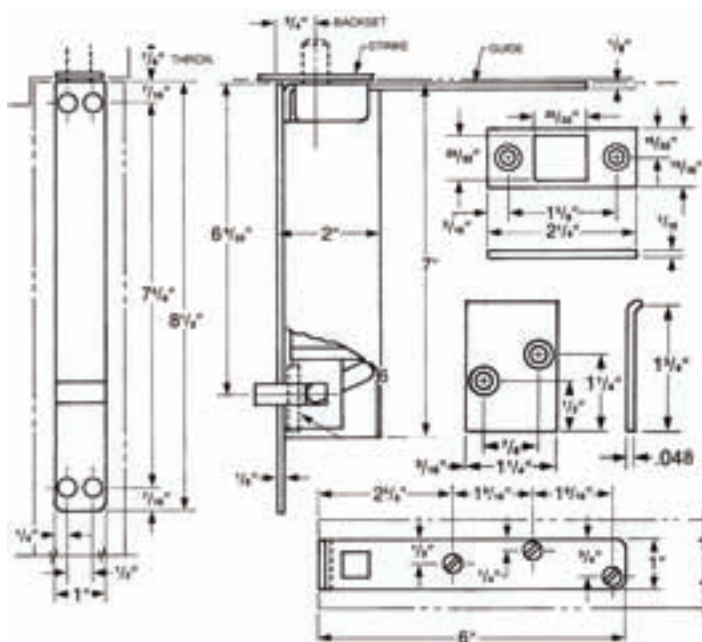
- Fully Automatic, Non-Handed.
- Automatic 3/4" Throw with 1" Vertical Adjustment.
- 12" Rod to Fit Standard ANSI Preparation.
- Spring Override in Case of Misalignment.
- Steel Body and Stainless Steel Components.
- Bolt Housing Screws #8 x 32 x 3/4" MS
#8 x 1" SM
- Strike Screws #8 x 32 x 3/4" MS
#8 x 1" SM
- Bolt Guide Screws #8 x 32 x 3/4" MS
#8 x 1" SM
- Listed up to 3 hours on Hollow Metal and Steel-Covered Composite Doors up to 8 feet.

CODE COMPLIANCE



- ANSI - A156.3.
- BHMA - 4.4 Type 25.
- ANSIA117.1 and ADA for barrier-free accessibility.
- C-UBC – California Amended Uniform Builders Code.
- NFPA 80- National Fire Protection Association.
- NFPA 101 - National Fire Protection Association - Life Safety.

1 YEAR WARRANTY

AUTOMATIC FLUSHBOLTS FOR WOOD DOORS**FBA291****SPECIFICATIONS**

Automatic Flushbolt for Wood Doors - Automatic flushbolts for composite wood doors shall be by **TA** model number FBA291 series and body shall be made of Steel and stainless steel components. Flushbolts shall be automatically retracting when active door is opened and projected into the frame header or floor when the door is closed. Bolts shall project 3/4" from the top or bottom edge of the door with 3/4" adjustment.

FEATURES

- Fully Automatic, Non-Handed.
- Automatic 3/4" Throw and 3/4" Vertical Adjustment.
- Spring Override in Case of Misalignment.
- Steel Body and Stainless Steel Components.
- Bolt Housing Screws #8 x 3/4" SM
#8 -32 x 1/4" MS
- Strike Screws # 8 x 3/4" SM
- Bolt Guide Screws #10 x 7/8" SM
- Rub Plate Screws #8 x 3/4" SM
- Listed up to 1-1/2 hours on Composite Wood Doors up to 8 Feet.

CODE COMPLIANCE

- ANSI - A156.3.
- BHMA - 4.4 Type 25.
- Conforms to UL10C and UBC 7-2.
- ANSI A117.1 and ADA for barrier-free accessibility.
- C-UBC - California Amended Uniform Builders Code.
- NFPA 80 - National Fire Protection Association.
- NFPA 101 - National Fire Protection Association - Life Safety.

1 YEAR WARRANTY